



Pennsylvania
Department of Community
& Economic Development
Center for Community Services

Neighborhood Assistance Program (NAP)

Helping Build Successful Communities



Philadelphia, PA



Commonwealth of Pennsylvania
Josh Shapiro, Governor

PA Department of Community & Economic Development
dced.pa.gov





Program Overview

For over 30 years, the Neighborhood Assistance Program (NAP) has been a valuable resource for nonprofits, businesses and neighborhoods. The goal of NAP is to encourage community participation and partnerships among nonprofits, businesses and residents, aiming to benefit distressed areas and/or low-income populations.

NAP helps nonprofits achieve their goals by supporting projects that revitalize and energize Pennsylvania communities. Tax credit programs like NAP foster vital relationships between nonprofits and the private sector. NAP is a potent way for nonprofits to offset project costs while also empowering businesses to make meaningful contributions to their communities. Tax credit programs such as NAP do not offer actual dollars for funding. Tax credits are intended as an incentive for corporate partners to contribute real dollars in return for the tax credits.

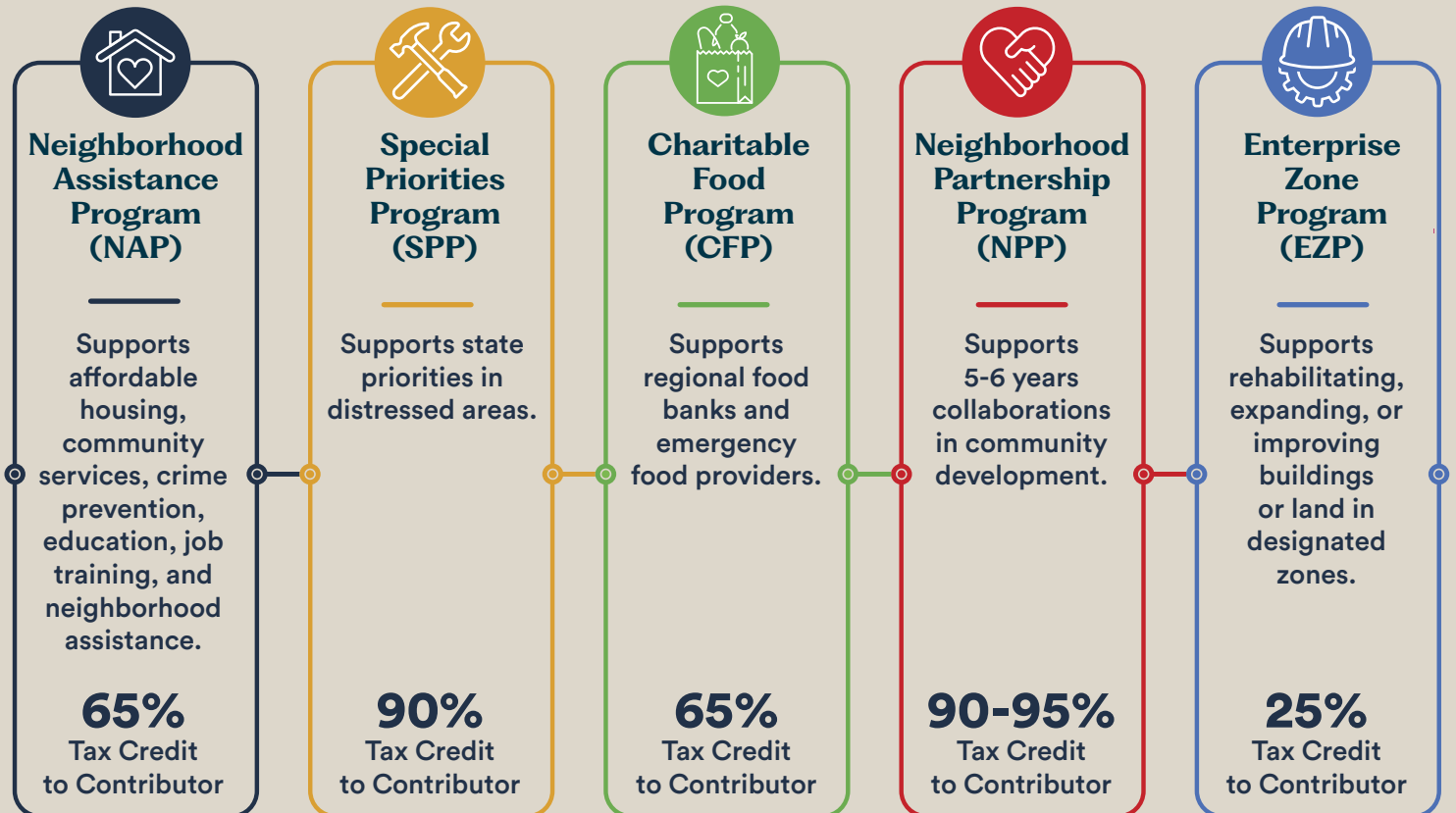
"NAP has been a game-changer for Rebuilding Together Philadelphia, enabling us to provide critical home repairs to vulnerable Philadelphia residents that we would not have been able to serve otherwise. NAP not only supports safe, healthy homes but also strengthens the entire community by preventing displacement and blight."

– Stefanie Seldon, President & CEO, Rebuilding Together Philadelphia

NAP Activities

NAP projects cover a wide range of activities, including affordable housing projects, emergency food distribution, addressing social injustices, providing employment services, community economic development, and many others. Businesses are encouraged to engage with nonprofits leading these initiatives.

NAP Subprograms





Erie, PA

Tax Credits for Businesses Doing Good in our Communities

If your business is partnering with a neighborhood organization to support projects in a fiscally distressed neighborhood or low-income community, you could be eligible for Pennsylvania tax credits through the NAP.

Community Success Through Collaboration

NAP encourages partnerships among nonprofits, businesses, and residents to support distressed areas or low-income neighborhoods. By collaborating through NAP, nonprofits can secure the funding and investment necessary for community development projects to succeed.

A Powerful Community Resource Midwest Food Bank Pennsylvania (MFB PA)

Midwest Food Bank Pennsylvania (MFB PA) is one of ten branches of the Midwest Food Bank, the largest independent food bank in the nation. Established in late 2020 in Middletown, PA, the MFB PA strategically located itself in a logistical hub in the Northeast. Initially serving 30 nonprofit partners in Central PA, it now supports over 200 partners, including 68 local organizations. With the United States wasting nearly 40% of its annual food supply, MFB PA's mission is to rescue and distribute this surplus to those in need, preventing it from ending up in landfills.

In the past year, MFB PA rescued 211 truckloads of food, nearly doubling its distribution from the previous year to an estimated value of \$18 million. Operated primarily by volunteers, with nearly 1,500 individuals contributing their time in 2023, MFB PA embodies community collaboration. Despite increasing demands, it has met the challenge, distributing 33% more food in the first two months of 2024 compared to the same period last year.

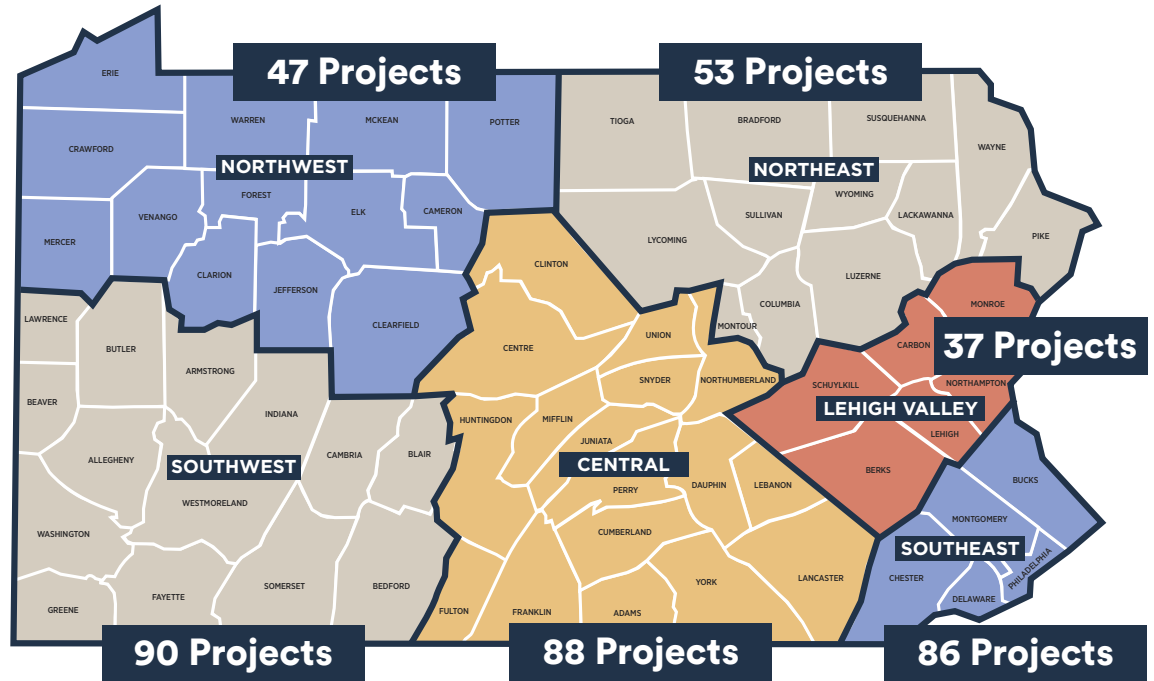
Through programs like NAP and the support of local communities, all food is provided to nonprofit partners free of charge, benefitting pantries, youth programs, shelters, and grassroots ministries. Looking ahead, MFB PA aims to expand with a larger warehouse to better serve local communities across Pennsylvania and beyond.



Midwest Food Bank
Middletown, PA

NAP Regional Tax Credit Awards

In 2025-26, the tax credit awards highlighted the ongoing importance of NAP across the state. NAP activities remained strong with numerous projects statewide, demonstrating the continued need for partnerships between government, nonprofits, and business to address local community issues. Business engagement remains essential for the success of NAP in revitalizing communities and fostering development.



Meet the Team

The Department of Community and Economic Development's regional offices are the first point of contact for local agencies and municipalities regarding economic development programs. They are also an excellent point of contact for businesses looking to engage with and support agencies involved in the Neighborhood Assistance Program. We're committed to improving the quality of life for all Pennsylvanians by revitalizing our cities and boroughs. Contact an office near you to get started!

PA Department of Community & Economic Development Customer Service Center

Commonwealth Keystone Building
400 North Street, 4th Floor
Harrisburg, PA 17120-0225

Tel: +1.866.466.3972 | Email: ra-dcedcs@pa.gov

Northwest
100 State Street, Suite 205
Erie, PA 16507
Christi Martone
cmartone@pa.gov
814.871.4241

Central
400 North Street, 4th Floor
Commonwealth Keystone Bldg.
Harrisburg, PA 17120-0225
Madra Clay
maclay@pa.gov
717.720.7397

Lehigh Valley
449 Wild Mint Lane
Allentown, PA 18104
Fadia Halma
fhalma@pa.gov
717.877.8481

Southwest
301 5th Avenue, Suite 250
Pittsburgh, PA 15222
Johnna Pro
jopro@pa.gov
412.565.5098

Southeast
1650 Arch Street, Suite 2500
Philadelphia, PA 19103
Michael Shorr
mshorr@pa.gov
215.560.3793

Northeast
2 North Main Street
Pittston, PA 18640
Paul Macknosky
pmacknosky@pa.gov
570.963.4122